



# DAMTITE® PRO

Superior-Quality WATERPROOFING & REPAIR Solutions!

## Construction Market PRODUCTS

### Waterproofing Dampproofing

Moisture penetration is one of the most critical issues with concrete structures. Liquid-applied, high-performance membranes as well as cementitious coatings provide the most economical and longest lasting protection against worse conditions and locations, including:

- interior/exterior
- above/below grade
- water-induced damage from unprotected structures corrosion from alkali, salts, acid, mold as well as from deterioration, resulting in poor interior air quality

### Wall Coatings

Our high-build, superior-quality coatings provide the most economical and longest lasting protection against adverse weather conditions from exposure to sun, wind, rain and temperature. Our pro-quality formulas include smooth, textured and elastomeric coatings which increase the value, the sustainability and appearance of the structures.

### Concrete Repair

Our experienced tech support team provides best product for each specific application and recommend the correct product for long term, sustainable protection and integrity of each project.

### Water Repellents

Concrete, Masonry, Brick & Stucco surfaces need to be protected from the damages of wind-driven rain, freeze-thaw cycles and moisture/chloride intrusion from de-icing salts. We offer high performance water repellents which penetrate the surface without forming a film. Other advantages:

- keeps original substrate appearance
- permits moisture vapor to escape
- seals and protects
- extends life of the substrate



Division of Wall Firma, Inc.

733 E. Main Street • Monongahela, PA 15063-1499 • 724-258-7175 • FAX: 724-258-3188

[www.damtitewaterproofing.com](http://www.damtitewaterproofing.com)



Solutions for Moisture Penetration

# Waterproofing



**DAMTITE<sup>®</sup> PRO**

Superior-Quality WATERPROOFING & REPAIR Solutions!



# DAMTITE<sup>®</sup> PRO

Superior-Quality WATERPROOFING & REPAIR Solutions!

## WATERPROOFING

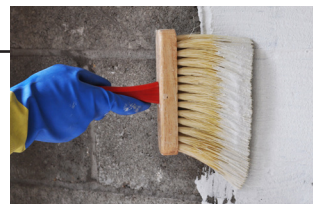
### *Solutions for Moisture Penetration*

**Overview:** Moisture penetration is one of the most critical issues with concrete structures. Liquid-applied, high-performance membranes as well as cementitious coatings provide the most economical and longest lasting protection against worse conditions and locations, including:

- interior/exterior
- above/below grade
- water-induced damage from unprotected structures corrosion from alkali, salts, acid, mold as well as from deterioration, resulting in poor interior air quality

### **FOUNDATION & SPLIT-SLAB WATERPROOFING:**

**DamSeal CA 6140/6150 Coatings:** Cold-applied, emulsified, asphaltic dampproofing and vapor-retarding coating used on "green" or slightly damp surfaces. For Interior above grade & Exterior below grade surfaces.



### **CEMENTITIOUS WATERPROOFING:**

**DamSeal HD Waterproofing Coating:** Portland cement waterproofing/dampproofing coating for concrete, masonry, brick, stucco and stone surfaces. Equivalent formula to NSF-certification as safe potable water coating. Resists hydrostatic pressure. Fills pores & voids; covers surface irregularities; eliminates concrete rubbing requirements. Provides an economical, low maintenance finish, on interior/exterior, above or below-grade project applications. Available in White plus Gray for foundation or first re-coat of white pre-coated surface.

**DamSeal 50 Crystalline Waterproofing System:** A crystalline, capillary waterproofing system to stop water passage through concrete from both the positive and negative sides of the substrate. Equivalent formula to NSF-certification for use in potable water applications (ASNI/NSF Standard 61).

**DamPlug Waterproofing Hydraulic Cement:** Non-shrink, high-strength waterproofing mortar for concrete, masonry, brick, stone and stucco. Mix with water to a putty consistency. Sets in 3-5 minutes to stop active water leaks and seepage under pressure through holes, cracks, wall-floor joints, swimming pools, water storage tanks, fountains, ponds and drains. Use also to seal around pipes, to anchor metal, wood and other materials into concrete. Does not contain metallic aggregates or corrosive agents.

**DamBond AB Bonding & Modifying Admixture:** 100% acrylic, water-resistant admixture to add into cementitious formulas in order to improve durability, workability, adhesion and physical properties, including flexural and cohesive strengths. Use as an additive to DamSeal HD, Portland cement mortars, plasters, scratch & brown, stuccos and concrete mixes, per label instructions on quantity of liquid to add to powdered mortars.

### **APPLICATIONS**

#### **Commercial:**

- Plaza Decks
- Split Slab
- Cavity Walls
- Foundation Walls
- Planters
- Parking Decks

#### **Industrial:**

- Containment
  - Primary
  - Secondary
- Tunnels
- Cooling Towers
- Storage Silos

#### **Infrastructure:**

- Containment Vessels (NSF)
- Elevator Shafts
- Sewers/Manholes

#### **Residential:**

- Parking Decks
- Foundation/Retaining Walls

### **DAMTITE WATERPROOFING**

733 E. Main Street • Monongahela, PA 15063-1499

PHONE: 724-258-7175 • FAX: 724-258-3188 • email: [info@damtitewaterproofing.com](mailto:info@damtitewaterproofing.com) • [www.damtitewaterproofing.com](http://www.damtitewaterproofing.com)



Solutions for Weathering Protection & Beautification

# Wall Coatings



**DAMTITE<sup>®</sup> PRO**

Superior-Quality WATERPROOFING & REPAIR Solutions!



# DAMTITE<sup>®</sup> PRO

Superior-Quality WATERPROOFING & REPAIR Solutions!

## WALL COATINGS

### *Solutions for Weathering Protection & Beautification*

**Overview:** Our high-build, superior-quality coatings provide the most economical and longest lasting protection against adverse weather conditions from exposure to sun, wind, rain and temperature. Our pro-quality formulas include smooth, textured and elastomeric coatings which increase the value, the sustainability and appearance of the structures.

#### **HIGH BUILD COATINGS:**

**DamGuard HB2000 100% Acrylic Coating:** Waterproof coating formulated for airless spray application – reducing application time and labor costs. Bonds well to various concrete & masonry surfaces. Resists penetration of wind-driven rain, atmospheric CO<sub>2</sub> and other damaging exterior conditions. Permits water vapor to permeate from behind coating to provide long-term durability and protection.

**DamGuard HB2000 HiR 100% Acrylic Coating for Parking Structures:** Highly-reflective, 100% acrylic coating formulated for use on interior of parking structures – reducing energy costs & increasing security. Maintains brightness while protecting concrete reinforcing bars from corrosion, caused by atmospheric CO<sub>2</sub>.

#### **ELASTOMERIC COATINGS:**

**DamGuard EL7500 100% Acrylic Coating:** Elastomeric Waterproof coating with high elongation & high recovery to sustainable performance over substrates with cracks. Resists wind-driven rain & penetration of atmospheric CO<sub>2</sub> while beautifying and providing long-term protection to structure. Breathable, so moisture vapor permeates surface.

**DamGuard EL8500 Silicone-modified Coating:** Water-based, acrylic, waterproof, elastomeric coating with superior hide. Crack-bridging & wind-driven rain resistance properties provide best protection against severe weather.

#### **ACRYLIC COATINGS:**

**DamGuard C2500 Coating:** 100% acrylic, smooth coating with outstanding permeability and bond strength to previously-coated surfaces. Provides 1-coat hide; easy to apply. Beautifies with long lasting durability.

**DamGuard C3500 Coating:** Formulated with high hydrophobic properties to repel moisture and dirt for long lasting performance and appearance. Provides lower application and maintenance costs with excellent color retention.

#### **PRIMERS & BLOCKFILLERS:**

**DamGuard Primer 1000:** Modified-acrylic formula to use on various substrates to improve adhesion & durability prior to applying DamGuard Coatings.

**DamGuard Primer 1500:** Modified-acrylic, tintable primer to use with Damtite High-Build Coatings to seal surfaces & improve the adhesion/workability. Breathable; provides uniform color before applying finish coat. In smooth or textured.

**DamGuard Block-Fill FL 7490:** Heavy, acrylic block filler which fills pores but breathable, so vapor escapes. Can apply to damp substrates; reduced labor costs realized since easy application and workability.

#### **ABOVE GRADE APPLICATIONS**

- Renovation or New
- Foundation Walls
- Planters
- Parking Garages

- Hotels / Office Buildings
- Warehouses
- Commercial Buildings
- Strip Malls, Malls and Shops

#### **Residential Buildings:**

- Apartments / Condos
- Hi-Rise Multifamily

#### **DAMTITE WATERPROOFING**

733 E. Main Street • Monongahela, PA 15063-1499

PHONE: 724-258-7175 • FAX: 724-258-3188 • email: [info@damtitewaterproofing.com](mailto:info@damtitewaterproofing.com) • [www.damtitewaterproofing.com](http://www.damtitewaterproofing.com)



Solutions for Durability & Appearance

# Concrete Repair



**DAMTITE<sup>®</sup> PRO**

Superior-Quality WATERPROOFING & REPAIR Solutions!



# DAMTITE<sup>®</sup> PRO

Superior-Quality WATERPROOFING & REPAIR Solutions!

## CONCRETE REPAIR

### *Solutions for Durability & Appearance*

**Overview:** Our experienced tech support team provides best product for each specific application and recommend the correct product for long term, sustainable protection and integrity of each project.

---

### ***SURFACE PREP & REBAR CORROSION PROTECTION:***

***DamBond P1124 Bonding Agent & Anti-Corrosion Coating:*** Water-based, 3-component epoxy & cementitious bonding agent for coating reinforcing steel rebar & concrete for protection against corrosion. Up to 24 hours open time.

***DamPatch T500:*** Chemically-resistant, high strength repair mortar for application up to 4-inch thickness for patch repairs.

### ***SURFACE REPAIR MORTARS:***

***DamPatch N4200 Corrosion Inhibitor:*** Trowel-grade, polymer-modified, high strength repair mortar.

***DamPatch N4230:*** Fast-setting, polymer cementitious repair mortar. Horizontal/Vertical/Overhead.

***DamPatch N4240:*** Small-repair, fast-setting, non-sag cementitious mortar for Horizontal/Vertical/Overhead.

***DamPatch N4250:*** 1-component, silica-fume enhanced, polymer-modified, cementitious repair mortar for Vertical & Overhead, up to 2-inch deep without forms. Includes glass bead additive for best workability & finishing. 6000+ psi.

***DamPatch N4000:*** 2-component, polymer-modified, high-build lightweight, cementitious repair mortar for Vertical & Overhead, in deep lifts to 3-inch deep vertical & 1.5-inch overhead. Apply by hand, trowel or low-pressure wet sprayer.

***DamPatch N4270:*** Low-slump, fast setting, Portland cement base, multi-purpose mortar for finish detailed architectural projects. No forms or multi-layered casting required. High strength.

### ***TRAFFIC REPAIR:***

***DamPatch T106 Concentrate & T107 Cement:*** Rapid-setting, 1-component, polymer-modified, high strength repair mortar for bridges, roadways, pavement repairs when minimum downtime is required. DOT-approved; C948-compliant.

***DamPatch T4300 Extended Set Time:*** Rapid-setting, high-strength, 1-component, polymer-modified mortar with extended work time, for hot temperature applications. Permits epoxy coating to be applied over repair patch within 6 hours.

***DamPatch T5450 & 5450 HiTemp:*** High-strength, 1-component, concrete/anchoring mortar. Use regular formula when below 850 F; HiTemp between 85-1000 F. Both offer rapid-set, early high strength & non-shrink high bond. Resist chemicals.

***DamPatch T3100 Corrosion Inhibitor:*** High-strength, 1-component, polymer-modified, flowable mortar with corrosion inhibitor for various applications. Excellent to patch or resurface damaged horizontal concrete surfaces.

### ***STRUCTURAL REPAIR:***

***DamPatch S4400, S4400 MC & S4400 CI:*** High-strength, 1-component, flowable, shrink-adjusted mortar for deep repair projects. Pumpable. Use on Form & Pour applications.

***DamPatch S4600 Corrosion Inhibitor:*** High-strength, 1-component, flowable, shrink-adjusted mortar with corrosion inhibitor for horizontal or formed vertical/overhead concrete repair applications.

### ***CRACK REPAIR and BONDING:***

***DamBond 109 RS & 3260:*** 2-component, 100% solids liquid epoxy bonding adhesives for pressure-injection grouting for projects where high strength is required quickly after application. 3260 ideal for warm environment, longer work time.

---

#### **DAMTITE WATERPROOFING**

733 E. Main Street • Monongahela, PA 15063-1499

PHONE: 724-258-7175 • FAX: 724-258-3188 • email: [info@damtitewaterproofing.com](mailto:info@damtitewaterproofing.com) • [www.damtitewaterproofing.com](http://www.damtitewaterproofing.com)



Solutions for Moisture Intrusion

# Water Repellents



**DAMTITE<sup>®</sup> PRO**

Superior-Quality WATERPROOFING & REPAIR Solutions!





# DAMTITE<sup>®</sup> PRO

Superior-Quality WATERPROOFING & REPAIR Solutions!

## WATER REPELLENTS

### *Solutions for Moisture Intrusion*

**Overview:** Concrete, Masonry, Brick & Stucco surfaces need to be protected from the damages of wind-driven rain, freeze-thaw cycles and moisture/chloride intrusion from de-icing salts. We offer high performance water repellents which penetrate the surface without forming a film. Other advantages:

- keeps original substrate appearance
- permits moisture vapor to escape
- seals and protects
- extends life of the substrate

### VERTICAL SUBSTRATE APPLICATIONS:

**DamGuard H1770 Water Repellent:** Water-based, high performance, clear, penetrating sealer for Dense Vertical surfaces, including brick, stucco and natural stone. Use interior/exterior. Breathable. High, long-term beading.

**DamGuard CMU H1850 Water Repellent:** Water-based, high performance sealer specifically designed for extended protection of split-faced light & medium weight CMU/block. Provides highest solids for water repellency while being breathable. Excellent for porous block substrate. High, long-term beading.

**DamGuard H2000 Silane 20% Sealer:** Water-based, penetrating silane sealer with 20% solids. Use on various surfaces, horizontal/vertical, including concrete, exposed aggregate, masonry, brick, stucco, precast concrete & USDA.

**DamGuard H1070 Silane/Siloxane Sealer:** Water-based, economical, clear penetrating sealer designed for various vertical applications, such as poured-in-place concrete, brick, stucco & precast concrete. Interior/Exterior. Breathable.

**DamGuard H10000 100% Silane Sealer:** Water-based, clear penetrating sealer designed to penetrate deeply into the pores of concrete to provide longest lasting protection to substrates with high traffic abrasion (bridge decks, highway & parking lot surfaces), Will not harm metal, glass, wood or painted surfaces adjacent to application areas. No masking required prior to application. Use on new/existing substrates interior/exterior. Provides highest amount of repellency and chloride ion protection.

### HORIZONTAL SUBSTRATE APPLICATIONS:

**DamGuard H2000 Silane 20% Sealer:** Water-based, penetrating silane sealer with 20% solids. Use on various surfaces, including concrete, exposed aggregate, masonry, brick, stucco, precast concrete & USDA.

**DamGuard H4000 Silane 40% Sealer:** Water-based, penetrating silane sealer with 40% solids. Use on various surfaces exposed to weathering & chloride ions. Provides longest lasting protection. Interior/Exterior use.

**DamGuard H10000 100% Silane Sealer:** Water-based, clear penetrating sealer designed to penetrate deeply into the pores of concrete to provide longest lasting protection to substrates with high traffic abrasion (bridge decks, highway & parking lot surfaces), Will not harm metal, glass, wood or painted surfaces adjacent to application areas. No masking required prior to application. Use on new/existing substrates interior/exterior. Provides highest amount of repellency and chloride ion protection.

#### DAMTITE WATERPROOFING

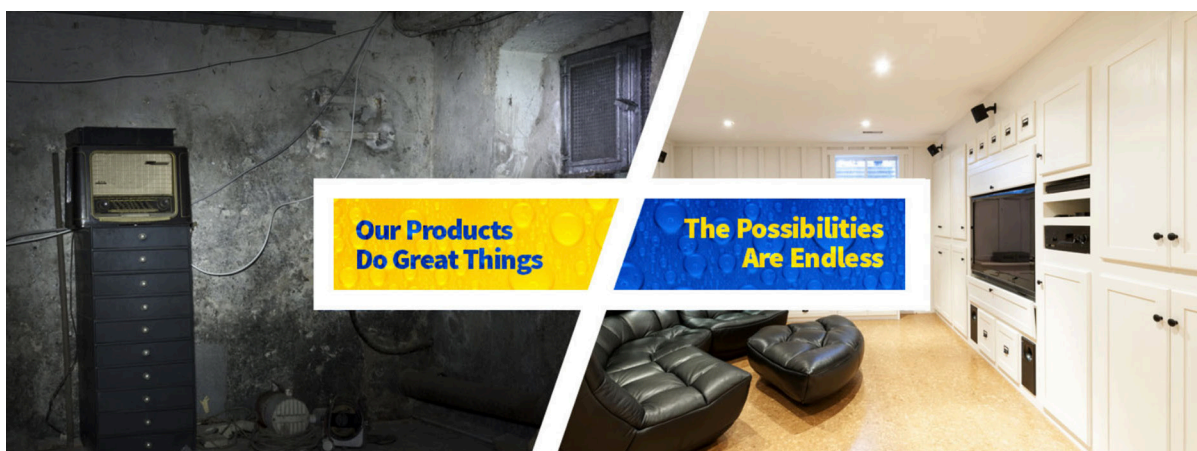
733 E. Main Street • Monongahela, PA 15063-1499

PHONE: 724-258-7175 • FAX: 724-258-3188 • email: [info@damtitewaterproofing.com](mailto:info@damtitewaterproofing.com) • [www.damtitewaterproofing.com](http://www.damtitewaterproofing.com)



# DAMTITE® PRO

Superior-Quality WATERPROOFING & REPAIR Solutions!



## What Is Your Project?

Damtite offers a wide-range of high-performance products providing reliable solutions for residential and commercial waterproofing projects. Homeowners, contractors and construction professionals in over 25 countries use Damtite products to repair, restore, waterproof, beautify and protect interior and exterior areas. As a leading manufacturer, our innovative materials provide long-lasting solutions for any of your masonry needs. Whether you are creating, repairing, or improving structures, Damtite's versatile product lines offer solutions all over the world.



**Decorate & Waterproof**



**Protect with Clear Sealers**



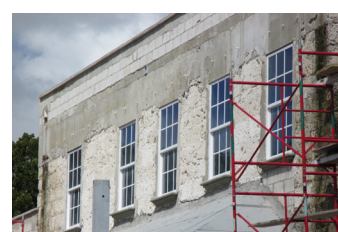
**Patch, Repair & Resurface**



**Anchor & Secure**



**Seal Potable Water Cisterns**



**Coat Historical Structures**

All of our powder products, including our Powder Waterproofers, Hydraulic/Anchor Cements and Concrete Patches, are made with the materials from the Earth's natural minerals. Application of our Powder Products reduces CO<sup>2</sup> emissions as they do not expel Volatile Organic Compounds (VOC) into the atmosphere. Application of these products reduces energy waste on heating or air conditioning by insulating the surface coated or patched and improves indoor air quality measures. Our containers are also recyclable.

*Division of Wall Firma, Inc.*

733 E. Main Street • Monongahela, PA 15063-1499 • 724-258-7175 • FAX: 724-258-3188  
[www.damtitewaterproofing.com](http://www.damtitewaterproofing.com)